

VACUUM FITTINGS & COMPONENTS

MechaTech Systems Ltd supply a wide range of NW/KF/ISO vacuum components, detailed herein, high quality, competitively priced. If you are unfamiliar with high vacuum components and not sure what to order, please contact us and we will be pleased to advise.



**SINGLE SOURCE STOCKISTS OF VACUUM PUMPS
SPARES - SERVICE - SPECIALIST SUPPORT**

**UK MANUFACTURERS OF LYODRY FREEZE DRYERS,
& HIGH VACUUM SYSTEMS (VACUUM DRYERS, VACUUM DEGASSING
SYSTEMS, HYSCAN II & S35 GAS SAMPLING SYSTEMS)**

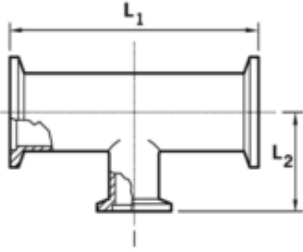
www.mechatechsystems.co.uk



enquiries@mechatechsystems.co.uk | +44 (0) 1454 414723

NW/KF VACUUM FITTINGS

size L₁ L₂ L₃ D part numbers



Reducing T-Piece – Stainless Steel

NW25/16	100	27.4			KS-25-040
NW40/16	130	33.5			KS-40-040
NW40/25	130	65			KS-40-041
NW50/16	140	40			KS-50-040
NW50/25	140	65			KS-50-041

Blank Flange – Aluminium

NW10	30	12.2			KA-10-026
NW16	30	17.2			KA-16-026
NW25	40	26.2			KA-25-026
NW40	55	41.2			KA-40-026

Blank Flange - Stainless Steel

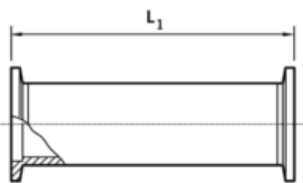
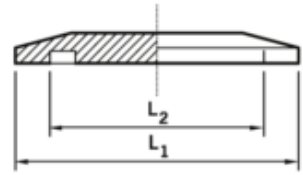
NW10	30	12.2			KS-10-026
NW16	30	17.2			KS-16-026
NW25	40	26.2			KS-25-026
NW40	55	41.2			KS-40-026
NW50	75	52.2			KS-50-026

Full Nipple - Aluminium

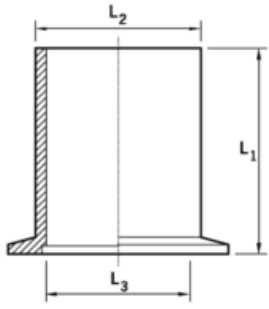
NW10	60				KA-10-028
NW16	80				KA-16-028
NW25	100				KA-25-028
NW40	130				KA-40-028

Full Nipple - Stainless Steel

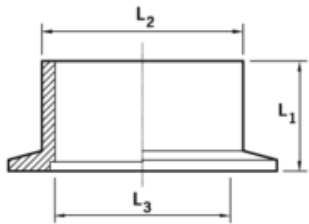
NW10	60				KS-10-028
NW16	80				KS-16-028
NW25	100				KS-25-028
NW40	130				KS-40-028
NW50	140				KS-50-028



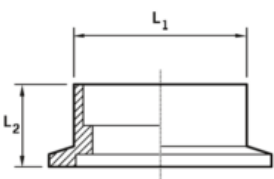
NW/KF VACUUM FITTINGS



For inch tube: D= tube OD



For inch tube: D= tube OD



L3 tube

size	L ₁	L ₂	L ₃	D	part numbers
------	----------------	----------------	----------------	---	--------------

Long Flange Weld Stub – Stainless Steel

NW10	70	15	10		KS-10-025
NW16	70	20	16		KS-16-025
NW25	70	28	24		KS-25-025
NW40	70	44.5	41		KS-40-025
NW50	70	57	51		KS-50-025

- For inch tube

NW10	40	12.7	9.3	½	KS-10-006
NW16	40	19.1	15.7	¾	KS-16-007
NW25	40	25.4	22	1	KS-25-008
NW40	40	38.1	34.7	1 ½	KS-40-009
NW50	40	50.8	47.4	2	KS-50-010

Short Flange Weld Stub – Stainless Steel

NW10	30	15	10		KS-10-024
NW16	30	20	16		KS-16-024
NW25	30	28	24		KS-25-024
NW40	30	44.5	41		KS-40-024
NW50	30	57	51		KS-50-024

- For inch tube

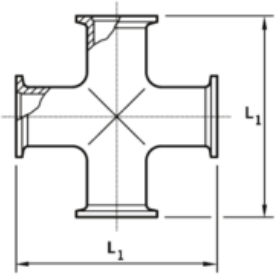
NW10	12.7	12.7	9.3	½	KS-10-001
NW16	12.7	19.1	15.7	¾	KS-16-002
NW25	12.7	25.4	22	1	KS-25-003
NW40	19.1	38.1	34.7	1 ½	KS-40-004
NW50	19.1	50.8	47.4	2	KS-50-005

Weld Socket Flange for Inch Tube – Stainless Steel

NW16	15.5	12.7	12.7	½	KS-16-011
NW16	22.1	12.7	19.1	¾	KS-16-012
NW25	28.6	12.7	25.4	1	KS-25-013
NW40	44.5	12.7	38.1	1 ½	KS-40-014
NW50	57.2	15.7	50.8	2	KS-50-015

NW/KF VACUUM FITTINGS

size	L ₁	L ₂	L ₃	D	part numbers
------	----------------	----------------	----------------	---	--------------



Cross Piece – Aluminium

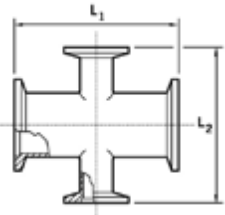
NW10	60				KA-10-031
NW16	80				KA-16-031
NW25	100				KA-25-031
NW40	130				KA-40-031

- Stainless Steel



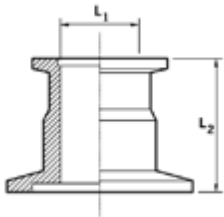
NW10	60				KS-10-031
NW16	80				KS-16-031
NW25	100				KS-25-031
NW40	130				KS-40-031
NW50	140				KS-50-031

Reducing Cross – Stainless Steel



NW25/10	70	70			KS-25-049
NW25/16	100	80			KS-25-047
NW40/16	130	80			KS-40-047
NW40/25	130	100			KS-40-048
NW50/25	140	100			KS-50-048

Reducing Piece – Aluminium

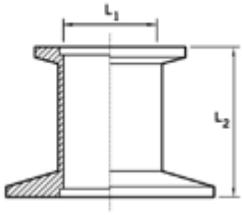


NW25/10	10	40			KA-25-042
NW25/16	10	40			KA-25-043
NW40/25	24	40			KA-40-044
NW40/16	16	40			KA-40-043
NW50/16	16	40			KA-50-043
NW50/25	24	40			KA-50-044
NW50/40	41	40			KA-50-045

Can't see what you need? We also offer bespoke vacuum fittings. Please contact us for details

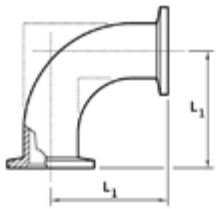
NW/KF VACUUM FITTINGS

size	L ₁	L ₂	L ₃	D	part numbers
------	----------------	----------------	----------------	---	--------------



Reducing Piece – Stainless Steel

NW25/10	10	40			KS-25-042
NW25/16	16	40			KS-25-043
NW40/25	16	40			KS-40-044
NW40/16	24	40			KS-40-043
NW50/16	16	40			KS-50-043
NW50/25	24	40			KS-50-044
NW50/40	40	40			KS-50-045



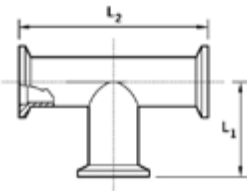
Elbow 90° - Aluminium

NW10	30				KA-10-029
NW16	40				KA-16-029
NW25	50				KA-25-029
NW40	65				KA-40-029

- Stainless steel

NW10	30				KS-10-029
NW16	40				KS-16-029
NW25	50				KS-25-029
NW40	60				KS-40-029
NW50	80.5				KS-50-029

T-Piece – Aluminium



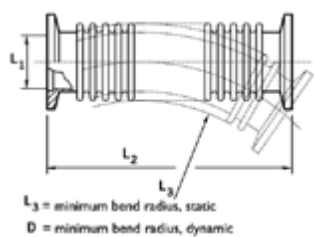
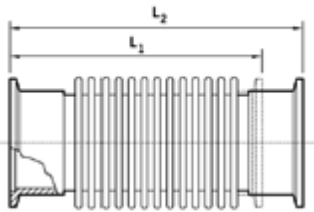
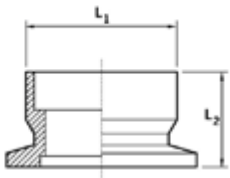
NW10	30	60			KA-10-030
NW16	40	80			KA-16-030
NW25	50	100			KA-25-030
NW40	65	130			KA-40-030



Make the right connections with MechaTech Systems

NW/KF VACUUM FITTINGS

size	L ₁	L ₂	L ₃	D	part numbers
T-Piece - Stainless Steel					
NW10	30	60			KS-10-030
NW16	40	80			KS-16-030
NW25	50	100			KS-25-030
NW40	65	130			KS-40-030
NW50	70	140			KS-50-030
Coupling Body - Brass					
NW10	18	13			C105-11-328
NW25	32	20			C105-14-328
NW40	46	18			C105-16-628
Flexible Bellows - stainless steel					
NW10	65	85			KS-10-046
NW16	65	85			KS-16-046
NW25	65	85			KS-25-046
NW40	65	85			KS-40-046
NW50	80	100			KS-50-046
Flexible pipelines - stainless steel					
NW10	12.2	250	30	100	KS-10-021
NW16	17.2	250	30	100	KS-16-021
NW25	26.2	250	50	210	KS-25-021
NW40	41.2	250	80	260	KS-40-021
NW50	52.2	250	100	320	KS-50-021
NW10	12.2	500	30	100	KS-10-022
NW16	17.2	500	30	130	KS-06-022
NW25	26.2	500	50	210	KS-25-022
NW40	41.2	500	80	260	KS-40-022
NW50	52.2	500	100	320	KS-50-022
NW10	12.2	1000	30	100	KS-10-023
NW16	17.2	1000	30	130	KS-16-023



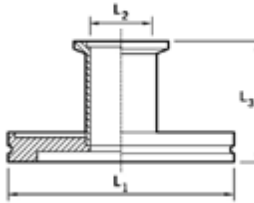
NW/KF VACUUM FITTINGS

size	L ₁	L ₂	L ₃	D	part numbers
------	----------------	----------------	----------------	---	--------------

Flexible pipelines – stainless steel (continued from overleaf)

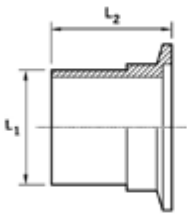
NW25	26.2	1000	50	210	KS-25-023
NW40	41.2	1000	80	260	KS-40-023
NW50	52.2	1000	100	320	KS-50-023

Adaptor NW/ISO – stainless steel



NW25/ISO63	95	25	50		IS-63-044
NW40/ISO63	95	40	50		IS-63-045
NW40/ISO100	130	40	50		IS-10-045
NW50/ISO100	130	50	50		IS-10-055

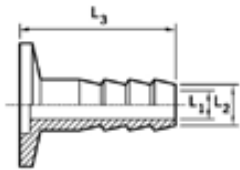
Adaptor PVC Hose – Stainless steel



D = hose internal diameter

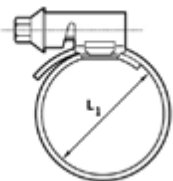
NW10/ ½" in hose	12.7	32		12.7	KS-10-016
NW16/ ½ in hose	12.7	32		12.7	KS-16-016
NW16/ ¾ in hose	19.1	32		19.1	KS-16-017
NW25/ 1 in hose	25.4	38.1		25.4	KS-25-018
NW40/1 ½ in hose	38.1	50		38.1	KS-40-019
NW50/2 in hose	47.4	55		50.8	KS-50-020

Nozzle – Aluminium



NW10	7	12	40		KA-10-032
NW25	7	12	40		KA-25-032
NW40	7	12	40		KA-40-032

PVC hose clamp – stainless steel



NW10/16	25				KS-10-039
NW25	36				KS-25-039
NW40	50				KS-40-039
NW50	60				KS-50-039

NW/KF VACUUM FITTINGS

size	L ₁	L ₂	L ₃	D	part numbers
------	----------------	----------------	----------------	---	--------------

Centering ring with 'O' ring- fluoroelastomer/stainless steel carrier

NW10	12	3.9	8		KS-10-127
NW16	17	3.9	8		KS-16-127
NW25	26	3.9	8		KS-25-127
NW40	41	3.9	8		KS-40-127
NW50	52	3.9	8		KS-50-127

- Fluoroelastomer/aluminium carrier

NW10	12	3.9	8		KA-10-127
NW16	17	3.9	8		KA-16-127
NW25	26	3.9	8		KA-25-127
NW40	41	3.9	8		KA-40-127

- Nitrile/stainless steel carrier

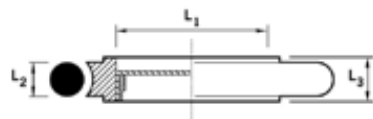
NW10	12	3.9	8		KS-10-227
NW16	17	3.9	8		KS-16-227
NW25	26	3.9	8		KS-25-227
NW40	41	3.9	8		KS-40-227
NW50	52	3.9	8		KS-50-227

- Nitrile/ aluminium steel carrier

NW10	12	3.9	8		KA-10-227
NW16	17	3.9	8		KA-16-227
NW25	26	3.9	8		KA-25-227
NW40	41	3.9	8		KA-40-227

Centering Ring with Screen- fluoroelastomer/stainless steel

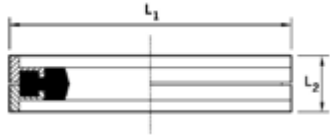
NW16	16	3.9	8		KS-16-133
NW25	25	3.9	8		KS-25-133
NW40	40	3.9	8		KS-40-133
NW50	50	3.9	8		KS-50-133



NW/KF VACUUM FITTINGS

size	L ₁	L ₂	L ₃	D	part numbers
------	----------------	----------------	----------------	---	--------------

Co-Seal – Nitrile/aluminium carrier



NW10/16

36

7

B271-58-480

NW20/25

42

7

B271-58-490

NW32/40

57

7

B271-58-500

Fluoroelastomer/aluminium carrier

NW10/16

32

7

B271-58-481

NW20/25

42

7

B271-58-491

NW32/40

57

7

B271-58-501

Metal seals – Aluminium



NW10/16

32

7

C271-59-004

NW20/25

42

7

C271-59-005

NW32/40

57

7

C271-59-006

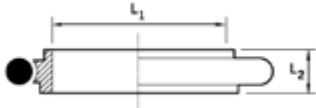
NW50

77

7

C271-59-007

Adapting Centering Ring with 'O' Ring - Nitrile



NW10/16 stainless steel

10

8

KS-10-234

Fluoroelastomer

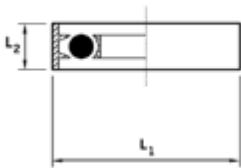
NW10/16 stainless steel

10

8

KS-10-134

NW Trapped 'O' Ring - Fluoroelastomer/stainless steel/aluminium



NW10/16

32.5

7

KA-10-138

NW25

42.5

7

KA-25-138

NW40

57.5

7

KA-40-138

NW50

77.5

7

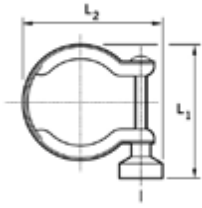
KA-50-138



Make the right connections with MechaTech Systems

NW/KF VACUUM FITTINGS

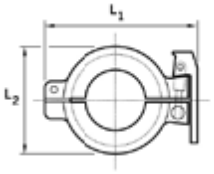
size	L ₁	L ₂	L ₃	D	part numbers
------	----------------	----------------	----------------	---	--------------



Clamping ring – stainless steel

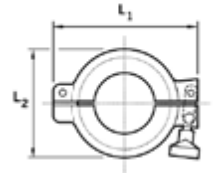
NW10/16	44	46			C105-12-401
NW20/25	60	60			C105-14-401
NW32/40	73	75			C105-16-401
NW50	90	96			C105-17-401

Hinged Clamp- Aluminium



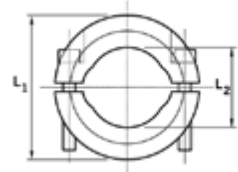
NW10/16	68	40			C105-12-402
NW20/25	80	50			C105-14-402
NW32/40	95	66			C105-16-402

Swing Clamp- Aluminium



NW10/16	62	40			KA-10-036
NW20/25	75	50			KA-25-036
NW32/40	90	66			KA-40-036
NW50	120	86			KA-50-036

Clamp (Metal Seals)- Stainless steel

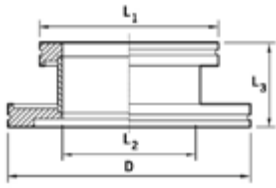


NW10/16	54	22			KS-10-037
NW20/25	64	32			KS-25-037
NW32/40	82	47			KS-40-037
NW50	112	62			KS-50-037



ISO VACUUM FITTINGS

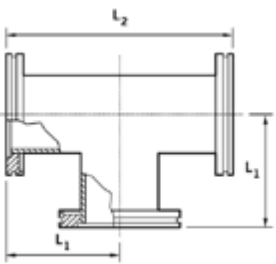
size **L₁** **L₂** **L₃** **D** **part numbers**



ISO/ISO Adapting Piece- Stainless steel

ISO100/ISO63	95	70	50	130
ISO160/ISO63	95	70	50	180
ISO160/ISO100	130	102	50	180

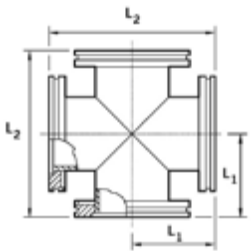
IS-10-058
IS-16-058
OS-16-059



T-Piece- Stainless steel

ISO63	88	176
ISO100	108	216
ISO160	138	276

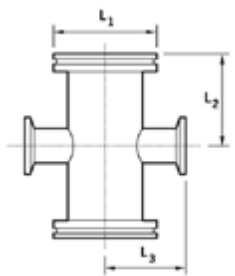
IS-63-030
IS-10-030
IS-16-030



Cross Piece- Stainless Steel

ISO63	88	176
ISO100	108	216
ISO160	138	276

IS-63-031
IS-10-031
IS-16-031



ISO To NW Reducing Cross- Stainless Steel

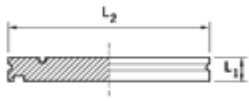
ISO63/NW16	95	102	58
ISO63/NW25	95	102	79
ISO63/NW40	95	102	76
ISO100-NW25	130	130	98
ISO100-NW40	130	130	95
ISO160-NW40	180	160	121
ISO160/NW50	180	160	136

IS-63-047
IS-63-048
IS-63-056
IS-10-048
IS-10-056
IS-16-056
IS-16-057

Make the right connections with MechaTech Systems

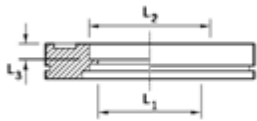
ISO VACUUM FITTINGS

size **L₁** **L₂** **L₃** **D** **part numbers**



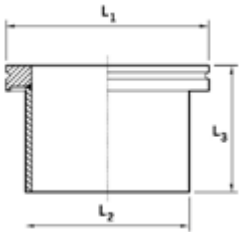
Blanking Flange For Use With Collar Flange- Stainless Steel

ISO63	12	95			IS-63-026
ISO100	12	130			IS-10-026
ISO160	12	180			IS-16-026



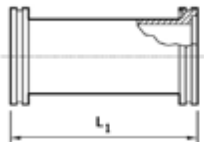
ISO Bored Flange- Stainless Steel

ISO63	60.2	63.5	5.5		IS-63-061
ISO100	98.3	102	5.5		IS-10-061
ISO160	148	152	5.5		IS-16-061



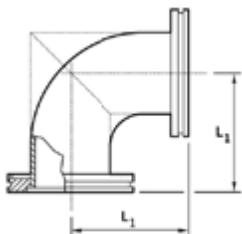
Collar Weld Stub- Stainless Steel

ISO63	95	76	100		IS-63-025
ISO100	130	108	100		IS-10-025
ISO160	180	159	100		IS-16-025



Nipple- Stainless Steel

ISO63	176				IS-63-028
ISO100	216				IS-10-028
ISO160	276				IS-16-028



Elbow 90°- Stainless Steel

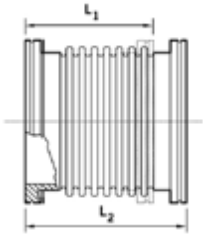
ISO63	88				IS-63-029
ISO100	108				IS-10-029
ISO160*	138				IS-16-029

* Shown dotted

ISO VACUUM FITTINGS

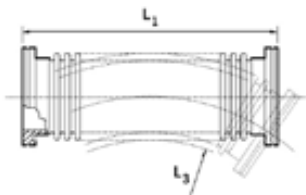
size	L ₁	L ₂	L ₃	D	part numbers
------	----------------	----------------	----------------	---	--------------

Flexible Elbows- Stainless Steel AISI 316L DIN 1.4404



ISO63	130	150			IS-63-046
ISO100	130	150			IS-10-046
ISO160	130	150			IS-16-046

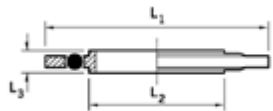
Flexible Pipelines- Stainless Steel



L₃ = minimum band radius, static

ISO63	250	140			IS-63-021
ISO100	250	200			IS-10-021
ISO63	500	140			IS-63-022
ISO100	500	200			IS-10-022
ISO63	1000	140			IS-63-023
ISO100	1000	200			IS-10-023

Trapped O-ring- Stainless Steel-Aluminium outer

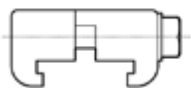


ISO63	95	70	8		IS-63-238
ISO100	128	102	8		IS-10-238
ISO160	179	153	8		IS-16-238

*Fluoroelastomer

ISO63	95	70	8		IS-63-138
ISO100	128	102	8		IS-10-138
ISO160	179	153	8		IS-16-138

Claw Clamps-Aluminium

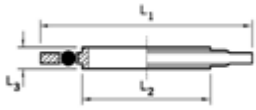


ISO63/ISO100					IA-63-054
ISO160/ISO250					IA-16-054

Number required: ISO63 – 4, ISO109 – 6, ISO160 -8, ISO250 – 10

ISO VACUUM FITTINGS

size **L₁** **L₂** **L₃** **D** **part numbers**

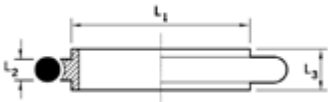


Trapped 'O' Ring – Aluminium centering ring, aluminium outer ring, fluoroelastomer

ISO63	95	70	8		IA-63-138
ISO100	128	102	8		IA-10-138
ISO160	179	153	8		IA-16-138

Centering Ring With 'O' Ring- Stainless Steel

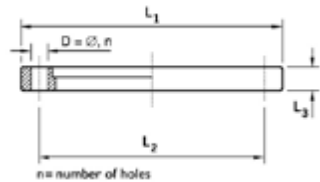
- Nitrile



ISO63	70	5.3	8		IS-63-227
ISO100	102	5.3	8		IS-10-227
ISO160	153	6.99	8		IS-16-227

- Fluoroelastomer

ISO63	70	5.3	8		IS-63-127
ISO100	102	5.3	8		IS-10-127
ISO160	153	6.99	8		IS-16-127



Rotatable Flange with Fitting Kit - Mild steel nickel plated

ISO63	130	110	12	9	4	IN-63-060
ISO100	165	145	12	9	8	IN-10-060
ISO160	225	200	16	11	8	IN-16-060



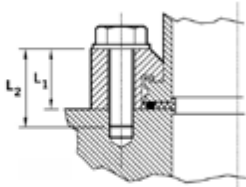
Can't see what you need? We also offer bespoke vacuum fittings. Please contact us for details

ISO VACUUM FITTINGS

size	L ₁	L ₂	L ₃	D	part numbers
------	----------------	----------------	----------------	---	--------------

Half Claw Clamp for Use With Centering Ring (Tapped Holes)

-Zinc plated mild steel body, stainless bolt

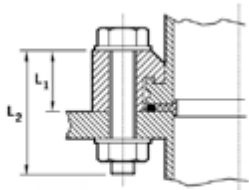


ISO63	22.5	35	M8	4	
ISO100	22.5	35	M8	8	
ISO160	23	40	M10	8	

IZ-63-052
IZ-10-052
IZ-16-052

Half Claw Clamp For Use With Centering Ring (Clear Hole)

-Zink plated mild steel body, stainless bolt



ISO63	22.5	35	M8	4	
ISO100	22.5	35	M8	8	
ISO160	23	40	M10	8	

IZ-63-053
IZ-10-053
IZ-16-053



ABOUT US: We are Bristol based UK specialists in High Vacuum Systems and manufacture **LyoDry Freeze Dryers**, **Hyscan II hydrogen in aluminium analyser**, and a comprehensive range of bespoke vacuum systems – award-winning **vacuum dryers**, **vacuum degassing systems**, and scientific instruments such as **S35 Gas Sampling Systems**: from design to installation, with first class aftersales support.

Our client base includes nuclear, oil & gas, pharma, food and beverage. We supply most UK universities and government research centres, and an increasing number overseas. We also supply **vacuum pumps and accessories** and **service vacuum pumps** from the leading brands, and all related spare parts.

For a quotation and/or any further information please contact us:
enquiries@mechatechsystems.co.uk | +44 (0) 1454 414723
 www.mechatechsystems.co.uk



MechaTech Systems Ltd, Unit 9 Brunel Way, Thornbury Industrial Estate, Thornbury, Bristol. BS35 3UR
 Registered in England and Wales No.6469333 | DUNS No: 211040934

enquiries@mechatechsystems.co.uk | +44 (0) 1454 414723